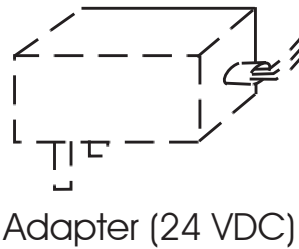
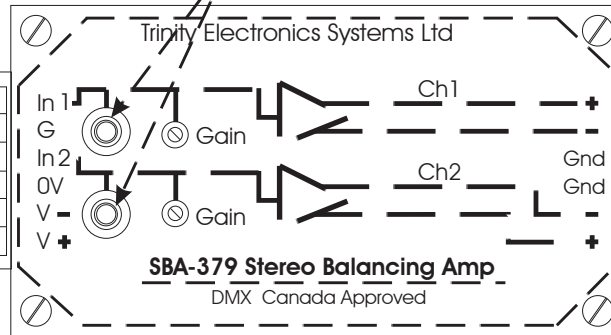


RCA jacks - alternate connection for input signal

Right Signal Input  
Left Signal Input

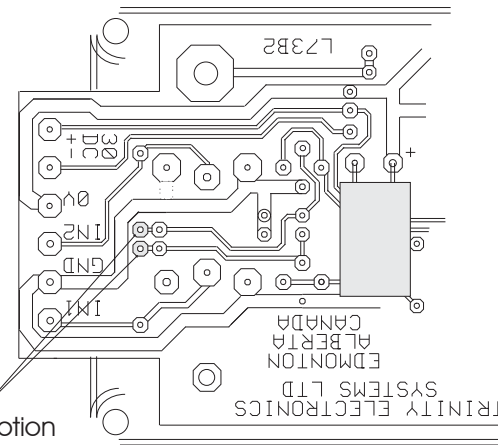


Negative lead has white stripe

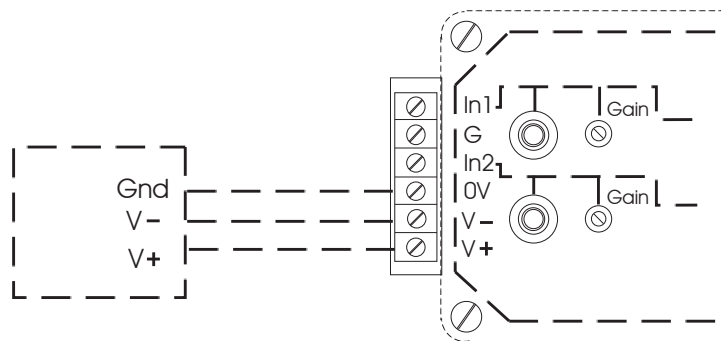


Right Output  
Left Output

Bottom of printed circuit board



To convert to sum-to-mono option flow solder between these two pads



Optional Bipolar DC Supply (+12 to +17 VDC)

Trinity Electronics Systems Ltd

Edmonton, Alberta, Canada

SBA-379 Stereo Balancing Amplifier

Drawn	Date	Drawing	Rev	Sht.
LP	20/Jun/96	WIRING4b.CDR	A2	1/1